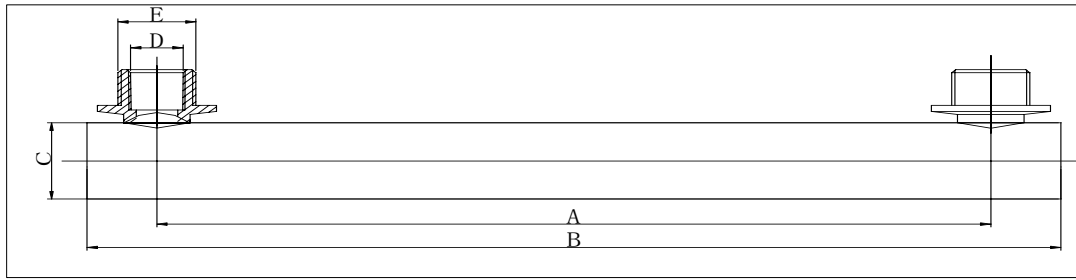
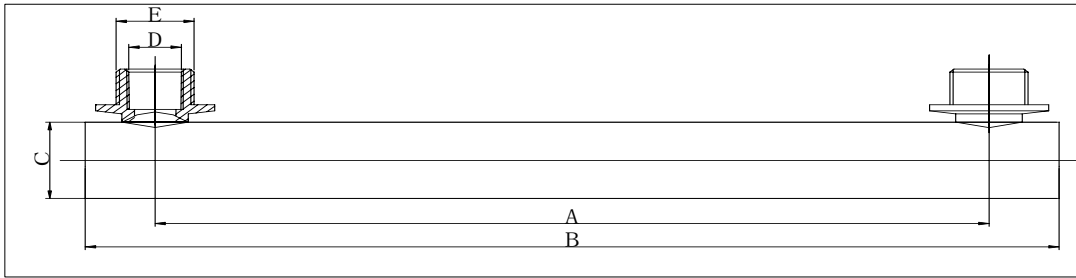


*Brass/AL/Copper Concentric Oil Cooler*



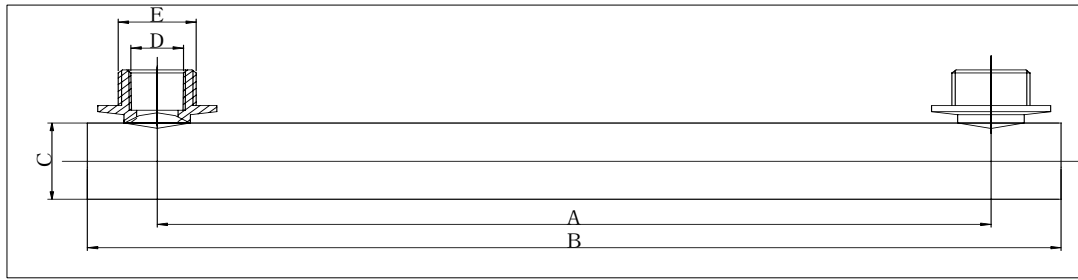
Part No.	φ C (MM)	A (MM)	B (MM)	Fitting Size		DPI
				External (E)	Intenal (D)	
YMG001	28	325	360	M14×1		19
YMG002	28	275	310	M14×1		21
YMG003	28	375	410	M14×1		39
YMG004	22	300	335	M14×1		46
YMG005	22	300	335	M14×1		48
YMG006	28	375	410	M14×1		50
YMG007	38	190.5	232	M22×1.5/M16×1.5	5/8-18UNF	78
YMG008	38	216	255	M20×1.5	1/2-20UNF	101
YMG009	22	300	335	M14×1		140
YMG010	25	300	335	M12×1		145
YMG011	38	216	255	M20×1.5	1/2-20UNF	161
YMG012	38	216	255	M20×1.5	1/2-20UNF	162
YMG013	38	216	255	M20×1.5	1/2-20UNF	168
YMG014	25	375	410	M14×1		178
YMG015	25	200	235	M12×1		219
YMG016	45	305	345	3/4-16UNF	1/4-18NPTF	227
YMG017	28	225	257	M12×1		242
YMG018	25	275	310	M14×1		246
YMG019	25	275	310	M14×1		248
YMG020	25	200	235	M12×1		263
YMG021	25	324	360	M14×1		292
YMG022	22	300	335	M12×1		314
YMG023	28	325	360	M12×1		333
YMG024	38	330	370	M16×1.5		438
YMG025	28	375	410	M14×1		450

*Brass/AL/Copper Concentric Oil Cooler*



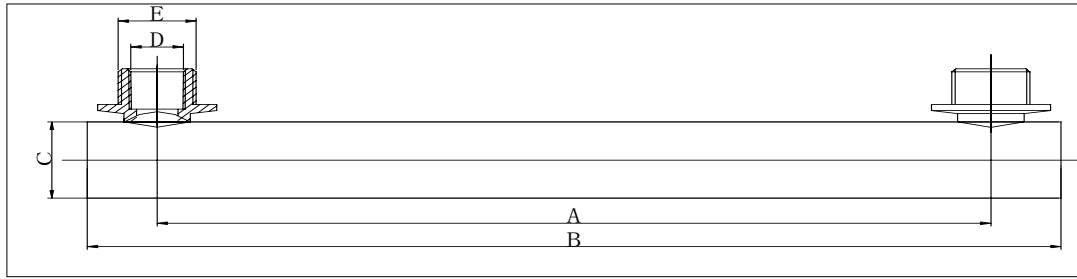
Part No.	φ C (MM)	A (MM)	B (MM)	Fitting Size		DPI
				External (E)	Intenal (D)	
YMG026	28	375	415	M16×1.5		453
YMG027	28	375	415	M16×1.5		472
YMG028	25	305	340	M16×1.5	1/8-27NPTF	500
YMG029	19	275	310	M12×1		519
YMG030	38	210	248	M18×1.5		528
YMG031	22	225	257	M12×1		537
YMG032	28	225	257	M12×1		539
YMG033	38	203	243	3/4-16UNF	1/4-18NPTF	547
YMG034	38	203	243	3/4-16UNF	1/4-18NPTF	556
YMG035	38	216	255	3/4-16UNF	1/2-20UNF	568
YMG036	38	216	255	3/4-16UNF	1/2-20UNF	569
YMG037	38	216	255	3/4-16UNF	1/2-20UNF	570
YMG038	32	216	255	3/4-16UNF	1/2-20UNF	571
YMG039	32	292	332	3/4-16UNF	1/2-20UNF	679
YMG040	25	292	332	3/4-16UNF	1/2-20UNF	712
YMG041	32	292	332	3/4-16UNF	1/2-20UNF	741
YMG042	32	216	255	3/4-16UNF	1/2-20UNF	752
YMG043	25	200	235	M12×1		788
YMG044	25	325	360	M14×1		836
YMG045	28	250	285	M14×1		865
YMG046	25	275	310	M14×1		870
YMG047	25	323	360	M14×1		886
YMG048	45	254	295	3/4-16UNF	1/4-18NPTF	890
YMG049	45	254	295	3/4-16UNF	1/4-18NPTF	891

*Brass/AL/Copper Concentric Oil Cooler*



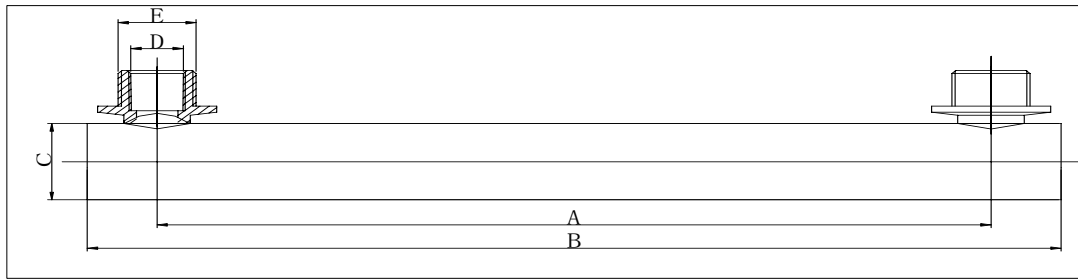
Part No.	$\phi C$	A	B	Fitting Size		DPI
	(MM)	(MM)	(MM)	External (E)	Intenal (D)	
YMG050	45	305	345	M22×1.5	3/8-18NPT	901
YMG051	32	292	332	3/4-16UNF	1/2-20UNF	907
YMG052	32	292	332	3/4-16UNF	1/2-20UNF	921
YMG053	32	292	332	3/4-16UNF	1/2-20UNF	924
YMG054	25	324	360	M14×1		928
YMG055	28	225	257	M12×1		931
YMG056	28	225	257	M12×1		932
YMG057	25	150	185	M14×1		935
YMG058	25	325	360	M12×1		939
YMG059	38	210	248	M18×1.5		941
YMG060	38	210	248	M18×1.5		942
YMG061	25	325	360	M20×1	1/8-27NPTF	945
YMG062	32	292	332	M22×1.5	1/2-20UNF	951
YMG063	38	210	248	M18×1.5		952
YMG064	34	365	405	M18×1.5	1/8-27NPTF	961
YMG065	34	305	342	M18×1.5	1/8-27NPTF	962
YMG066	25	292	332	3/4-16UNF	1/2-20UNF	976
YMG067	25	292	332	3/4-16UNF	1/2-20UNF	977
YMG068	38	210	248	M18×1.5		979
YMG069	38	365	400	M14×1.5	1/8-27NPTF	981
YMG070	28	300	335	M12×1		1039
YMG071	45	305	345	M22×1.5	3/8-18NPT	1061
YMG072	45	305	345	M22×1.5	3/8-18NPT	1062
YMG073	45	254	295	3/4-16UNF	1/4-18NPTF	1094

*Brass/AL/Copper Concentric Oil Cooler*



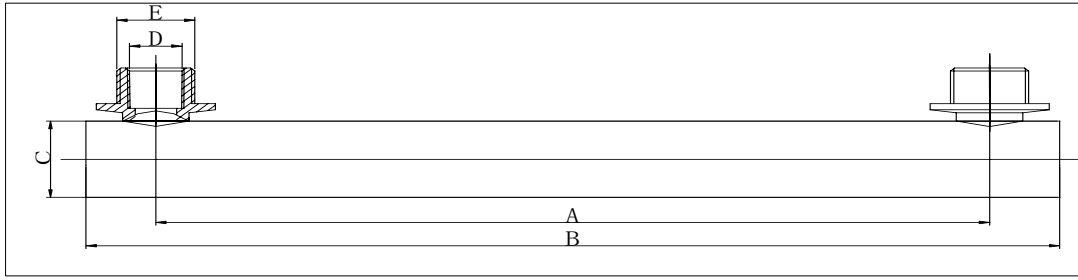
Part No.	φ C (MM)	A (MM)	B (MM)	Fitting Size		DPI
				External (E)	Intenal (D)	
YMG074	19	350	385	M14×1		1102
YMG075	19	325	360	M14×1		1104
YMG076	32	203	235	M12×1		1108
YMG077	32	203	235	M12×1		1109
YMG078	28	225	257	M12×1		1114
YMG079	28	300	335	M12×1		1117
YMG080	38	254	335	9/16-18UNF	1/8-27NPTF	1125
YMG081	22	300	335	M12×1		1129
YMG082	28	273	335	M14×1		1135
YMG083	28	275	310	M14×1		1140
YMG084	22	200	235	M14×1		1152
YMG085	28	325	360	M14×1		1155
YMG086	22	300	335	M12×1.25		1158
YMG087	45	305	345	M24×1.5	3/8-18NPT	1164
YMG088	25	200	235	M12×1		1168
YMG089	19	325	360	M12×1		1174
YMG090	22	301	335	M14×1		1178
YMG091	28	200	235	M14×1		1183
YMG092	28	280	315	M14×1		1190
YMG093	38	190.5	232	M22×1.5 M16×1.5	5/8-18UNF	1193
YMG094	19	225	257	M12×1		1202
YMG095	19	225	258	M14×1		1204
YMG096	25	292	332	M22×2.5	1/2-20UNF	1210
YMG097	25	292	332	22×2.5	1/2-20UNF	1211

*Brass/AL/Copper Concentric Oil Cooler*



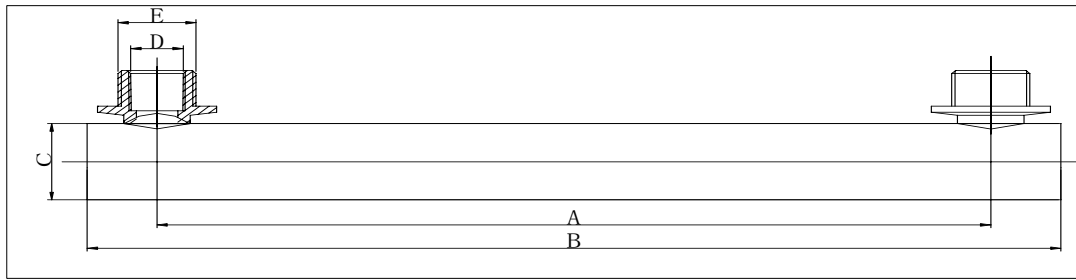
Part No.	φ C (MM)	A (MM)	B (MM)	Fitting Size		DPI
				External (E)	Intenal (D)	
YMG098	25	292	332	22×2.5	1/2-20UNF	1212
YMG099	22	300	335	M14×1		1241
YMG100	22	300	335	M14×1		1242
YMG101	22	350	385	M14×1		1244
YMG102	25	325	360	M12×1		1257
YMG103	22	300	342	M22×1.5	M14×1.5	1273
YMG104	25	350	385	M14×1		1276
YMG105	25	375	410	M14×1		1278
YMG106	38	203	243	M22×1.5	1/4-18NPTF	1279
YMG107	25	200	235	M14×1		1290
YMG108	38	210	248	M18×1.5		1295
YMG109	19	375	410	M12×1		1298
YMG110	28	365	400	M14×1		1302
YMG111	25	375	410	M14×1		1303
YMG112	25	375	410	M14×1		1304
YMG113	22	350	385	M14×1		1307
YMG114	38	360	400	M16×1.5		1312
YMG115	28	375	410	M12×1		1316
YMG116	22	200	235	M14×1		1317
YMG117	25	375	410	M14×1		1318
YMG118	19	225	257	M12×1		1319
YMG119	45	254	295	3/4-16UNF		1322
YMG120	25	225	265	M22×1.5	M14×1.5	1323
YMG121	25	225	265	M22×1.5	M14×1.5	1326

*Brass/AL/Copper Concentric Oil Cooler*



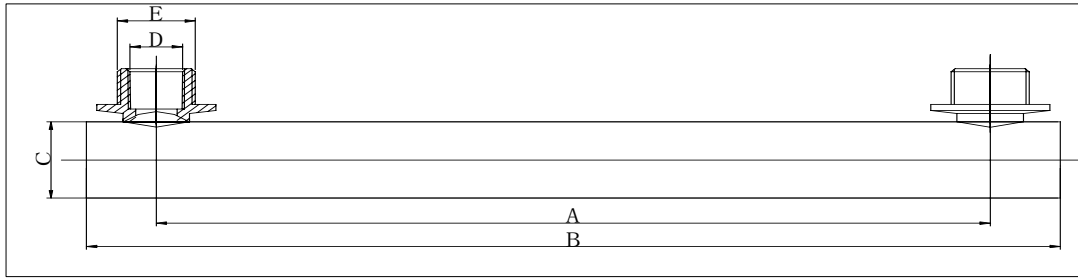
Part No.	$\phi C$	A	B	Fitting Size		DPI
	(MM)	(MM)	(MM)	External (E)	Intenal (D)	
YMG122	25	200	235	M14×1		1328
YMG123	45	305	345	3/4-16UNF	1/4-18NPTF	1333
YMG124	19	225	257	M12×1		1381
YMG125	38	305	335	M12×1		1388
YMG126	32	254	287	M14×1.5		1390
YMG127	38	254	286	M12×1		1391
YMG128	32	305	342	5/8-18UNF		1394
YMG129	32	305	342	5/8-18UNF		1395
YMG130	32	305	342	5/8-18UNF		1396
YMG131	32	292	332	22×2.5	1/2-20UNF	1398
YMG132	38	254	286	M12×1		1400
YMG133	25	275	310	M12×1		1407
YMG134	19	225	257	M12×1		1408
YMG135	28	225	257	M12×1		1409
YMG136	38	254	295	3/4-16UNF	1/4-18NPTF	1410
YMG137	25	200	235	M14×1		1419
YMG138	22	301	335	M14×1		1421
YMG139	22	301	335	M14×1		1426
YMG140	25	375	410	M14×1		1428
YMG141	28	365	400	M14×1		1430
YMG142	25	203	235	M12×1		1444
YMG143	45	305	345	3/4-16UNF	1/4-18NPTF	1451
YMG144	45	305	345	3/4-16UNF	1/4-18NPTF	1452
YMG145	45	305	345	3/4-16UNF	1/4-18NPTF	1453

*Brass/AL/Copper Concentric Oil Cooler*



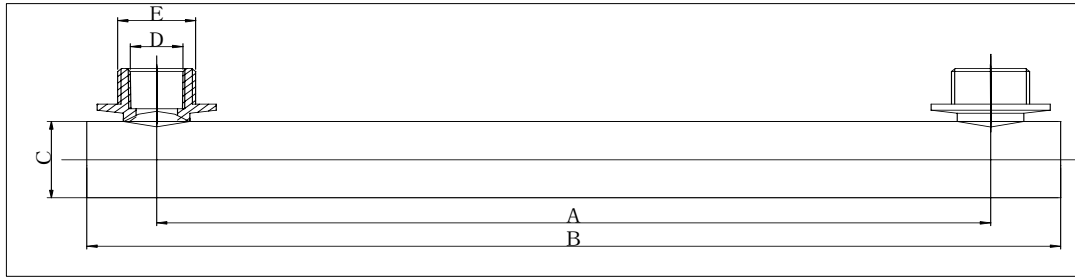
Part No.	$\phi C$	A	B	Fitting Size		DPI
	(MM)	(MM)	(MM)	External (E)	Intenal (D)	
YMG146	45	305	345	3/4-16UNF	1/4-18NPTF	1454
YMG147	45	305	345	3/4-16UNF	1/4-18NPTF	1455
YMG148	45	305	345	3/4-16UNF	1/4-18NPTF	1456
YMG149	25	324	360	M14×1		1494
YMG150	45	305	335	M14×1		1511
YMG151	25	324.5	360	M14×1		1548
YMG152	38	364.5	400	9/16-24UNEF		1552
YMG153	25	300	335	M12×1		1561
YMG154	25	325	360	M14×1		1568
YMG155	28	365	400	M14×1		1571
YMG156	25	325	360	M14×1		1572
YMG157	22	300	335	M12×1		1573
YMG158	25	324	360	M14×1		1581
YMG159	22	275	310	M14×1		1626
YMG160	28	275	310	M14×1		1627
YMG161	38	305	345	M22×1.5	5/8-18UNF	1682
YMG162	22	350	385	M14×1		1704
YMG163	25	365	405	M18×1.5	1/4-18NPTF	1707
YMG164	19	375	410	M12×1		1736
YMG165	45	305	345	3/4-16UNF	1/4-18NPTF	1737
YMG166	25	325	360	M14×1		1741
YMG167	25	375	410	M14×1		1746
YMG168	22	225	257	M12×1		1750
YMG169	25	300	335	M12×1		1752

*Brass/AL/Copper Concentric Oil Cooler*



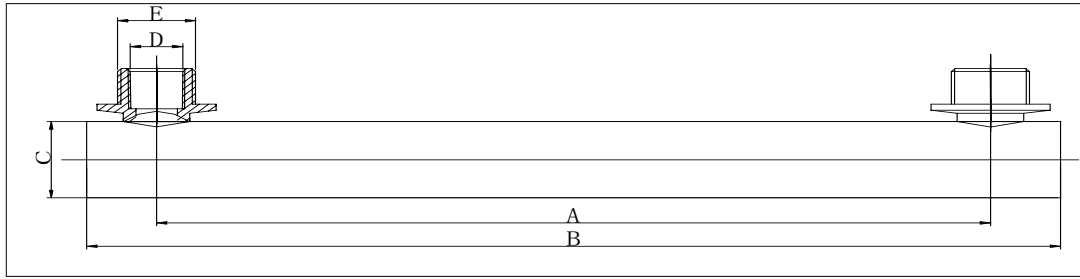
Part No.	φ C (MM)	A (MM)	B (MM)	Fitting Size		DPI
				External (E)	Intenal (D)	
YMG170	28	425	458	M14×1		1755
YMG171	28	425	458	M14×1		1774
YMG172	28	425	458	M14×1		1778
YMG173	25	324	360	M14×1		1815
YMG174	22	301	335	M12×1		1816
YMG175	22	275	310	M14×1		1822
YMG176	22	350	385	M14×1		1828
YMG177	22	350	385	M14×1		1832
YMG178	22	375	410	M12×1		1838
YMG179	38	210	248	M18×1.5		1841
YMG180	32	275	315	M20×1.5\M16×1.5	M14×1.5	1844
YMG181	25	375	410	M14×1		1854
YMG182	25	400	435	M14×1		1859
YMG183	32	292	332	22×2.5	1/2-20UNF	1889
YMG184	25	325	360	M14×1		1896
YMG185	38	366.5	410	7/8-14UNF/9/16-24UNEF	5/8-18UNF	1905
YMG186	22	375	410	M12×1		1906
YMG187	22	300	335	M12×1		1907
YMG188	28	375	410	M14×1		1909
YMG189	25	375	410	M14×1		1910
YMG190	38	390	420	M14×1		1917
YMG191	19	375	410	M12×1		1921
YMG192	28	275	310	M14×1		1930
YMG193	22	200	235	M14×1		1976

*Brass/AL/Copper Concentric Oil Cooler*



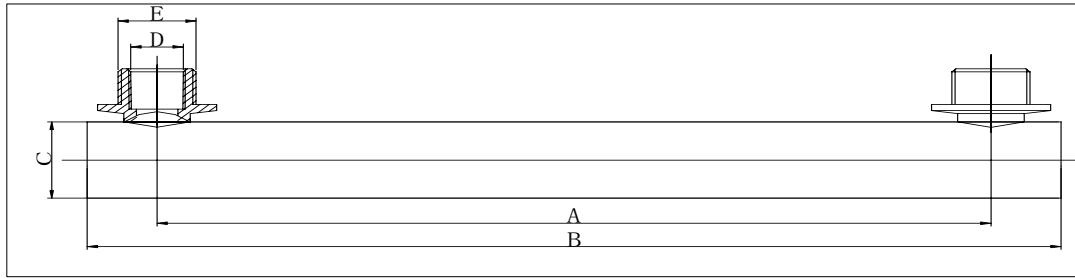
Part No.	φ C (MM)	A (MM)	B (MM)	Fitting Size		DPI
				External (E)	Intenal (D)	
YMG194	45	305	345	3/4-16UNF		1994
YMG195	45	305	345	3/4-16UNF		1995
YMG196	25	375	410	M14×1		1998
YMG197	22	350	385	M14×1		2030
YMG198	25	325	360	M14×1		2051
YMG199	22	375	410	M12×1		2054
YMG200	22	375	410	M12×1		2055
YMG201	28	275	310	M14×1		2056
YMG202	25	375	410	M14×1		2058
YMG203	25	350	385	M14×1		2063
YMG204	22	375	410	M12×1		2075
YMG205	22	375	410	M12×1		2076
YMG206	25	350	385	M12×1		2087
YMG207	25	325	360	M14×1		2147
YMG208	25	324	360	M14×1		2148
YMG209	28	375	410	M14×1		2153
YMG210	25	324	360	M14×1		2158
YMG211	25	324	360	M14×1		2159
YMG212	22	242	282	M22×1.5	5/8-18UNF	2184
YMG213	32	292	332	22×2.5	1/2-20UNF	2191
YMG214	19	225	257	M12×1		2198
YMG215	25	324	360	M14×1		2203
YMG216	19	350	385	M14×1		2209
YMG217	22	375	410	M12×1		2215

*Brass/AL/Copper Concentric Oil Cooler*



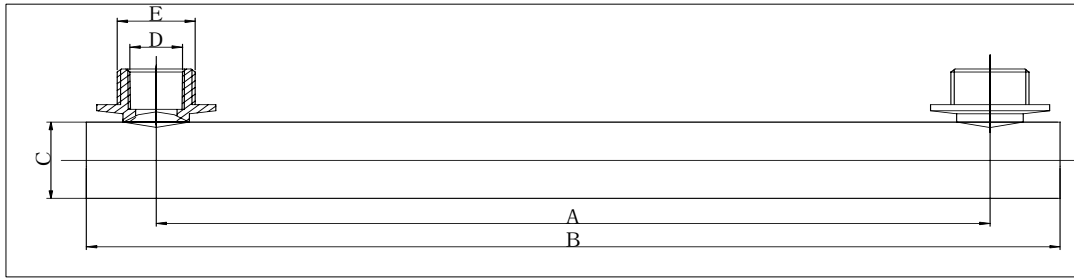
Part No.	Φ C	A	B (MM)	Fitting Size		DPI
				External (E)	Intenal (D)	
YMG218	25	375	410	M14×1		2222
YMG219	32	305	345	5/8-18UNF		2230
YMG220	32	305	345	5/8-18UNF		2231
YMG221	32	305	345	M18×1.5	1/4-18NPTF	2262
YMG222	22	275	310	M14×1		2268
YMG223	25	375	410	M14×1		2271
YMG224	25	350	385	M14×1		2278
YMG225	32	315	350	M16×1.5		2290
YMG226	25	400	435	M14×1		2292
YMG227	25	325	360	1/2-20UNF		2298
YMG228	25	300	335	M12×1		2300
YMG229	25	375	410	M12×1		2301
YMG230	22	350	385	M14×1		2303
YMG231	19	225	257	M12×1		2304
YMG232	19	225	257	M12×1		2305
YMG233	19	305	335	M14×1		2306
YMG234	35	375	410	M14×1		2320
YMG235	22	300	335	M14×1		2328
YMG236	22	350	385	M14×1		2329
YMG237	22	300	335	M14×1		2330
YMG238	22	380.5	410	M12×1		2339
YMG239	38	190.5	232	M22×1.5 M16×1.5	5/8-18UNF	2340
YMG240	32	292	332	M22×1.5	5/8-18UNF	2343
YMG241	22	300	335	M14×1		2346
YMG242	19	326	360	M14×1		2354
YMG243	25	375	410	M14×1		2362

*Brass/AL/Copper Concentric Oil Cooler*



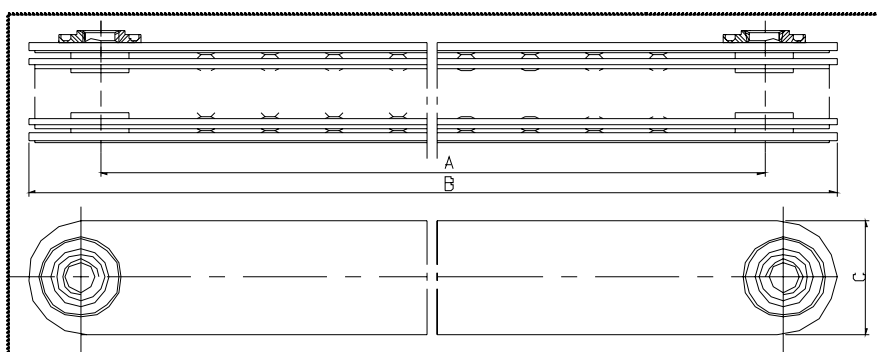
Part No.	φ C	A	B (MM)	Fitting Size		DPI
				External (E)	Intenal (D)	
YMG244	25	254	292	M20×1	M14×1.5	2384
YMG245	22	370	402	M12×1		2387
YMG246	22	440	470	M12×1		2389
YMG247	28	375	410	M14×1		2402
YMG248	19	390	420	M14×1		2403
YMG249	25	375	410	M12×1		2405
YMG250	25	375	410	M12×1		2410
YMG251	19	390	420	M14×1		2411
YMG252	25	325	360	M14×1		2412
YMG253	25	300	335	M14×1		2413
YMG254	22	350	385	M12×1		2414
YMG255	22	350	385	M12×1		2415
YMG256	25	375	410	M14×1		2417
YMG257	28	375	410	M14×1		2419
YMG258	28	375	410	M14×1		2427
YMG259	25	200	235	M14×1		2428
YMG260	25	375	410	M14×1		2434
YMG261	25	375	410	M14×1		2435
YMG262	25	375	410	M14×1		2437
YMG263	25	300	335	M12×1		2438
YMG264	25	325	360	M14×1		2443
YMG265	25	375	410	M14×1		2445
YMG266	25	300	335	M12×1		2448
YMG267	25	375	410	M14×1		2453
YMG268	22	300	335	M14×1		2469

*Brass/AL/Copper Concentric Oil Cooler*



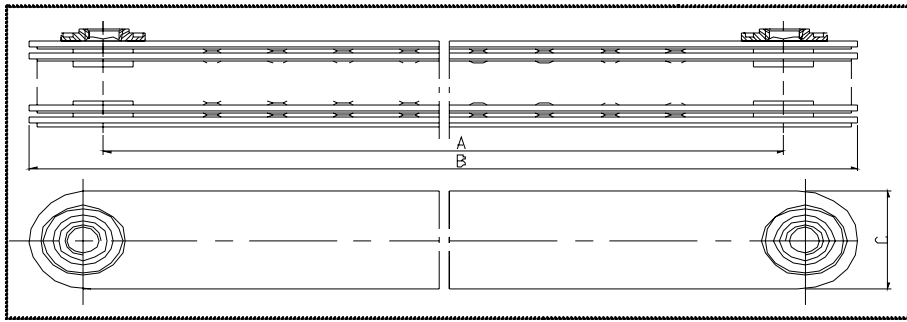
Part No.	Φ C	A	B (MM)	Fitting Size		DPI
				External (E)	Intenal (D)	
YMG269	25	325	360	M14×1		2569
YMG270	22	375	410	M12×1		2578
YMG271	22	375	410	M12×1		2588
YMG272	25	325	360	M14×1		2599
YMG273	22	360	395	M14×1		2600
YMG274	25	292	332	M22×1.5	M18×1.5	2608
YMG275	25	375	410	M14×1		2623
YMG276	22	375	410	M12×1		2671
YMG277	22	350	385	M14×1		2672
YMG278	22	350	385	M14×1		2673
YMG279	32	460	500	3/4-16UNF		2691
YMG280	22	375	410	M14×1		2692
YMG281	22	350	385	M12×1		2693
YMG282	25	375	410	M14×1		2703
YMG283	32	275	315	M20×1	M14×1.5	2728
YMG284	22	250	285	M14×1		2776
YMG285	25	325	360	M14×1		2797
YMG286	32	330	370	M16×1.5		2804
YMG287	32	330	370	M16×1.5		2805
YMG288	25	375	410	M14×1		2806
YMG289	25	375	410	M14×1		2810
YMG290	25	375	410	M14×1		2817
YMG291	28	325	360	M14×1		2923
YMG292	45	224.5	267	M22×1.5	M16×1.5	3232
YMG293	45	224.5	267	M22×1.5	M16×1.5	3258
YMG294	32	250	285	M14×1		3259
YMG295	25	375	410	M14×1		3400

*Stainless Steel/aluminum Plate Oil Cooler*



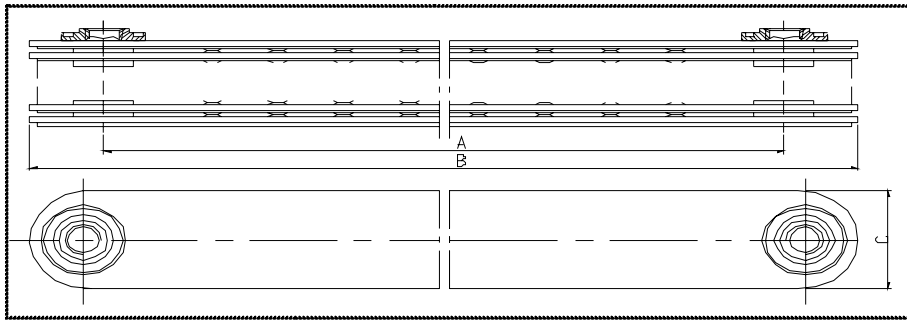
Part No.	C (MM)	A (MM)	No. of plate	B (MM)	DPI
YMB001	44	292	5	332	17
YMB002	44	292	3	332	17
YMB003	44	292	3	332	27
YMB004	44	292	2	332	92
YMB005	44	292	4	332	97
YMB006	44	292	4	332	129
YMB007	44	292	4	332	158
YMB008	63.5	216	3	308	162
YMB009	63.5	216	5	308	203
YMB010	63.5	216	5	308	204
YMB011	44	292	4	332	206
YMB012	63.5	216	3	308	217
YMB013	63.5	216	6	308	217
YMB014	63.5	216	3	308	218
YMB015	63.5	216	6	308	244
YMB016	63.5	216	3	308	244
YMB017	63.5	216	3	308	258
YMB018	63.5	216	3	308	258
YMB019	63.5	216	4	308	258
YMB020	63.5	216	3	308	269
YMB021	63.5	216	2	308	269
YMB022	63.5	216	5	308	278
YMB023	63.5	216	4	308	278
YMB024	44	292	2	332	312
YMB025	63.5	216	5	308	321
YMB026	63.5	216	4	308	321
YMB027	44	292	5	332	396
YMB028	44	292	4	332	434
YMB029	63.5	216	3	308	536
YMB030	63.5	216	5	308	555
YMB031	63.5	216	4	308	555

*Stainless Steel/aluminum Plate Oil Cooler*



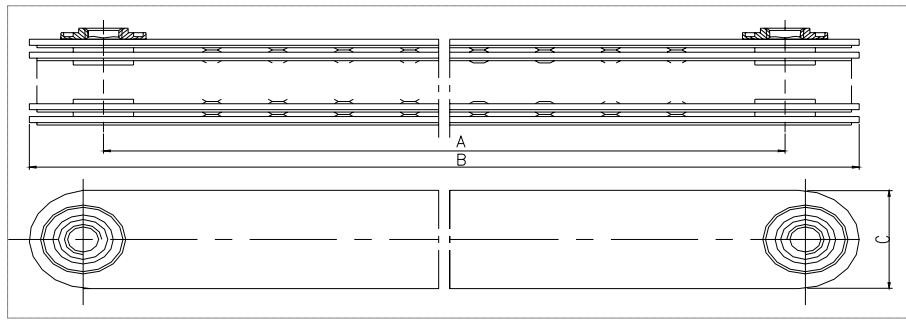
Part No.	C (MM)	A (MM)	No. of plate	B (MM)	DPI
YMB032	44	292	3	332	562
YMB033	44	292	3	332	570
YMB034	63.5	216	3	308	585
YMB035	63.5	216	5	308	606
YMB036	63.5	216	5	308	607
YMB037	63.5	216	5	308	610
YMB038	44	292	3	332	612
YMB039	44	292	4	332	616
YMB040	44	292	4	332	617
YMB041	44	292	4	332	619
YMB042	44	292	3	332	621
YMB043	44	292	3	332	622
YMB044	44	292	6	332	624
YMB045	44	292	7	332	624
YMB046	44	292	4	332	631
YMB047	63.5	216	3	308	650
YMB048	44	292	4	332	658
YMB049	44	292	4	332	677
YMB050	44	292	3	332	677
YMB051	44	292	4	332	681
YMB052	63.5	216	3	308	682
YMB053	63.5	216	2	308	683
YMB054	63.5	216	3	308	683
YMB055	44	292	4	332	684
YMB056	44	292	4	332	705
YMB057	44	292	4	332	705
YMB058	44	292	3	332	705
YMB059	63.5	216	5	308	707
YMB060	63.5	216	5	308	709
YMB061	63.5	216	3	308	714
YMB062	63.5	216	5	308	718
YMB063	44	292	3	332	720
YMB064	63.5	216	2	308	722
YMB065	44	292	3	332	726
YMB066	44	292	3	332	727

*Stainless Steel/aluminum Plate Oil Cooler*



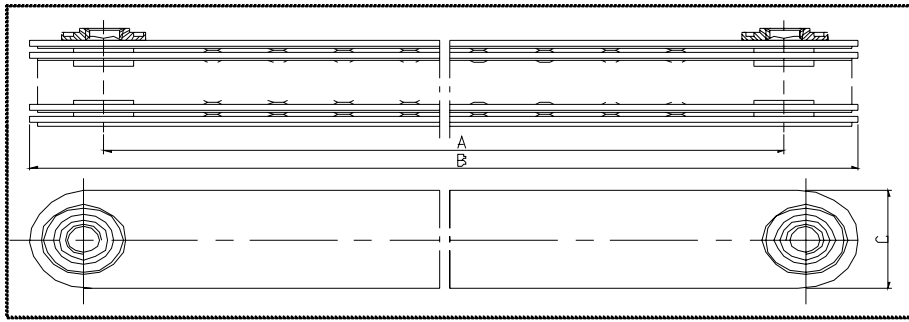
Part No.	C (MM)	A (MM)	No. of plate	B (MM)	DPI
YMB067	63.5	216	5	308	729
YMB068	63.5	216	5	308	730
YMB069	63.5	216	3	308	736
YMB070	44	292	3	332	738
YMB071	44	292	3	332	739
YMB072	44	292	4	332	749
YMB073	63.5	216	2	308	755
YMB074	63.5	216	3	308	755
YMB075	44	292	4	332	766
YMB076	44	292	3	332	768
YMB077	63.5	216	5	308	774
YMB078	44	292	4	332	775
YMB079	44	292	3	332	775
YMB080	63.5	216	3	308	777
YMB081	63.5	216	4	308	777
YMB082	63.5	216	3	308	798
YMB083	63.5	216	4	308	798
YMB084	63.5	216	3	308	799
YMB085	63.5	216	2	308	839
YMB086	63.5	216	2	308	840
YMB087	44	292	3	332	841
YMB088	63.5	216	3	308	846
YMB089	44	292	3	332	846
YMB090	44	292	4	332	852
YMB091	44	292	4	332	853
YMB092	44	292	4	332	856
YMB093	63.5	216	5	308	859
YMB094	63.5	216	6	308	859
YMB095	63.5	216	2	308	869
YMB096	63.5	216	3	308	872
YMB097	44	292	4	332	888
YMB098	44	292	3	332	920
YMB099	44	292	4	332	921
YMB100	44	292	4	332	923
YMB101	44	292	3	332	923

*Stainless Steel/aluminum Plate Oil Cooler*



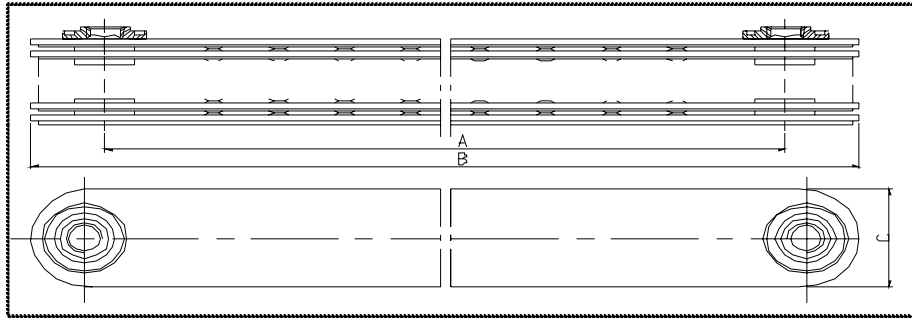
Part No.	C (MM)	A (MM)	No. of plate	B (MM)	DPI
YMB102	44	292	3	332	951
YMB103	44	292	3	332	954
YMB104	44	292	4	332	1033
YMB105	44	292	4	332	1034
YMB106	44	292	4	332	1035
YMB107	44	292	3	332	1046
YMB108	44	292	3	332	1047
YMB109	44	292	4	332	1049
YMB110	44	292	4	332	1051
YMB111	44	292	3	332	1051
YMB112	44	292	3	332	1052
YMB113	44	292	4	332	1053
YMB114	44	292	3	332	1054
YMB115	44	292	3	332	1060
YMB116	44	292	3	332	1065
YMB117	44	292	4	332	1067
YMB118	44	292	3	332	1071
YMB119	44	292	3	332	1092
YMB120	44	292	4	332	1203
YMB121	44	292	4	332	1205
YMB122	44	292	4	332	1206
YMB123	44	292	3	332	1207
YMB124	44	292	3	332	1210
YMB125	44	292	3	332	1211
YMB126	44	292	3	332	1214
YMB127	44	292	4	332	1216
YMB128	44	292	6	332	1218
YMB129	44	292	7	332	1218
YMB130	44	292	3	332	1272
YMB131	44	292	3	332	1339
YMB132	44	292	4	332	1340
YMB133	44	292	3	332	1341
YMB134	44	292	3	332	1342
YMB135	44	292	4	332	1343
YMB136	44	292	3	332	1344

*Stainless Steel/aluminum Plate Oil Cooler*



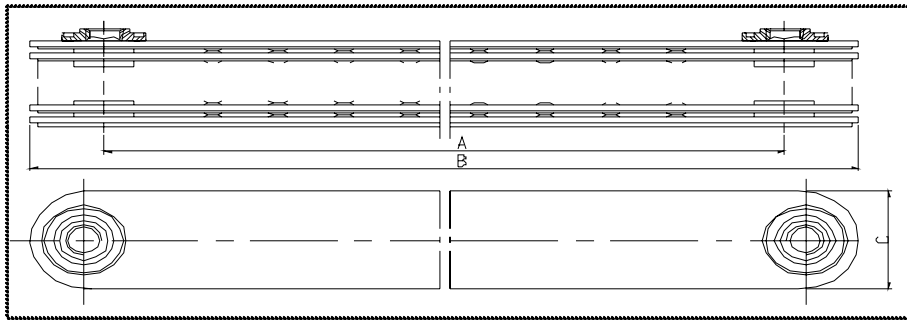
Part No.	C(MM)	A(MM)	No. of plate	B (MM)	DPI
YMB137	44	292	3	332	1347
YMB138	44	292	3	332	1348
YMB139	44	292	4	332	1358
YMB140	44	292	3	332	1358
YMB141	44	292	6	332	1360
YMB142	44	292	7	332	1360
YMB143	44	292	4	332	1366
YMB144	44	292	3	332	1369
YMB145	44	292	4	332	1370
YMB146	44	292	4	332	1386
YMB147	44.2	305	5	344.2	1388
YMB148	44.2	305	5	344.2	1388
YMB149	44.2	305	5	344.2	1392
YMB150	44.2	254	7	293	1447
YMB151	44	292	4	332	1470
YMB152	44	292	3	332	1470
YMB153	44	292	4	332	1471
YMB154	44	292	3	332	1471
YMB155	44	292	4	332	1474
YMB156	44	292	4	332	1475
YMB157	44	292	4	332	1476
YMB158	44	292	3	332	1477
YMB159	44	292	4	332	1485
YMB160	44	292	3	332	1486
YMB161	44	292	4	332	1489
YMB162	44	292	4	332	1515
YMB163	44	292	4	332	1516
YMB164	44	292	4	332	1517
YMB165	44	292	4	332	1518
YMB166	44	292	4	332	1519
YMB167	44	292	6	332	1521
YMB168	44	292	7	332	1521
YMB169	44	292	6	332	1522
YMB170	44	292	7	332	1522

*Stainless Steel/aluminum Plate Oil Cooler*



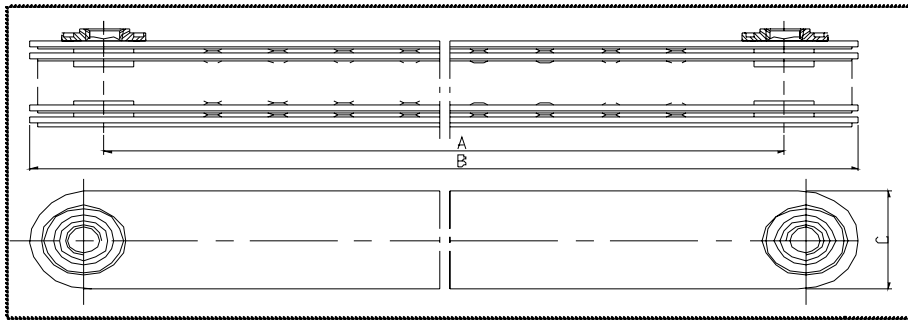
Part No.	C(MM)	A(MM)	No. of plate	B(MM)	DPI
YMB171	44	292	7	332	1523
YMB172	44	292	6	332	1524
YMB173	44	292	7	332	1524
YMB174	44	292	4	332	1525
YMB175	44	292	3	332	1525
YMB176	44	292	4	332	1528
YMB177	44	292	3	332	1531
YMB178	44	292	3	332	1532
YMB179	44	292	4	332	1533
YMB180	44	292	4	332	1534
YMB181	44	292	4	332	1535
YMB182	44	292	4	332	1536
YMB183	44	292	3	332	1539
YMB184	44	292	3	332	1540
YMB185	44	292	4	332	1546
YMB186	44.2	254	7	293	1550
YMB187	44	292	3	332	1563
YMB188	44	292	4	332	1595
YMB189	35	305	9	340	1609
YMB190	44	292	4	332	1610
YMB191	44	292	4	332	1683
YMB192	44	292	4	332	1684
YMB193	44	292	4	332	1685
YMB194	44	292	4	332	1687
YMB195	44	292	3	332	1690
YMB196	44	292	4	332	1690
YMB197	44	292	4	332	1692
YMB198	44	292	6	332	1693
YMB199	44	292	7	332	1693
YMB200	44	292	6	332	1694
YMB201	44	292	7	332	1694
YMB202	44	292	6	332	1696
YMB203	44	292	7	332	1696
YMB204	44	292	4	332	1700
YMB205	44	292	4	332	1706

*Stainless Steel/aluminum Plate Oil Cooler*



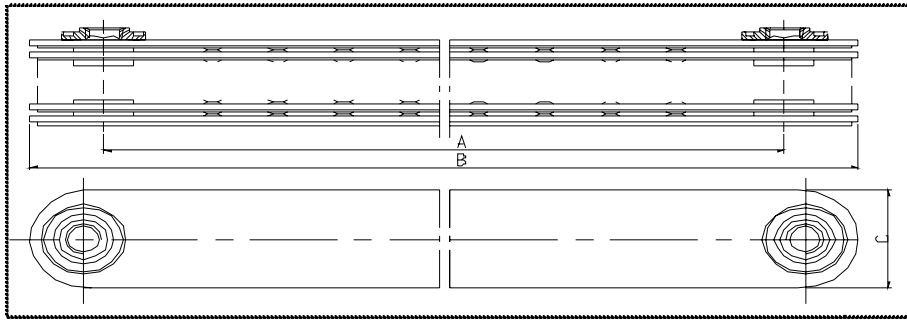
YMB206	44 (MM)	292(MM)	3	332 (MM)	1706
YMB207	44	254	7	293	1719
YMB208	44	292	3	332	1768
YMB209	44	292	4	332	1768
YMB210	44	292	4	332	1770
YMB211	44	292	4	332	1777
YMB212	44	292	4	332	1779
YMB213	44	292	4	332	1780
YMB214	44	292	4	332	1784
YMB215	44	292	3	332	1784
YMB216	44	292	4	332	1788
YMB217	44	292	5	332	1788
YMB218	44	292	4	332	1789
YMB219	44	292	4	332	1790
YMB220	44	292	5	332	1790
YMB221	44	292	6	332	1792
YMB222	44	292	7	332	1792
YMB223	44	292	7	332	1793
YMB224	44	292	6	332	1795
YMB225	44	292	7	332	1795
YMB226	44	292	4	332	1799
YMB227	44	292	4	332	1802
YMB228	44	292	3	332	1825
YMB229	39.6	254	7	293	1830
YMB230	44.2	305	7	344.2	1850
YMB231	44.2	305	7	344.2	1862
YMB232	44.2	254	7	293	1862
YMB233	44	292	3	332	1878
YMB234	44	292	4	332	1880
YMB235	44	292	4	332	1882
YMB236	44	292	4	332	1883
YMB237	44	292	3	332	1884
YMB238	44	292	4	332	1885
YMB239	44	292	4	332	1887
YMB240	44	292	4	332	1888

*Stainless Steel/aluminum Plate Oil Cooler*



Part No.	C (MM)	A (MM)	No. of plate	B (MM)	DPI
YMB241	44	292	4	332	1889
YMB242	44	292	4	332	1890
YMB243	44	292	4	332	1893
YMB244	44	292	4	332	1894
YMB245	44.2	305	7	344.2	1996
YMB246	44.2	305	7	344.2	1997
YMB247	44	292	4	332	2003
YMB248	44	292	4	332	2006
YMB249	44	292	4	332	2105
YMB250	44.2	305	7	344.2	2154
YMB251	44.2	305	7	344.2	2164
YMB252	44.2	305	7	344.2	2173
YMB253	44	292	3	332	2279
YMB254	44.5	305	6	344.2	2291
YMB255	44	292	7	332	2317
YMB256	44	292	4	332	2319
YMB257	44	292	5	332	2319
YMB258	44	292	4	332	2334
YMB259	44	292	4	332	2347
YMB260	44	292	4	332	2348
YMB261	44	292	4	332	2349
YMB262	44	292	4	332	2350
YMB263	44	292	3	332	2352
YMB264	44	292	3	332	2353
YMB265	44	292	4	332	2361
YMB266	44	292	4	332	2368
YMB267	44	292	6	332	2370
YMB268	44	292	7	332	2370
YMB269	44	292	4	332	2421
YMB270	44	292	7	332	2423
YMB271	44	292	4	332	2458
YMB272	44	292	3	332	2474
YMB273	44	292	4	332	2476

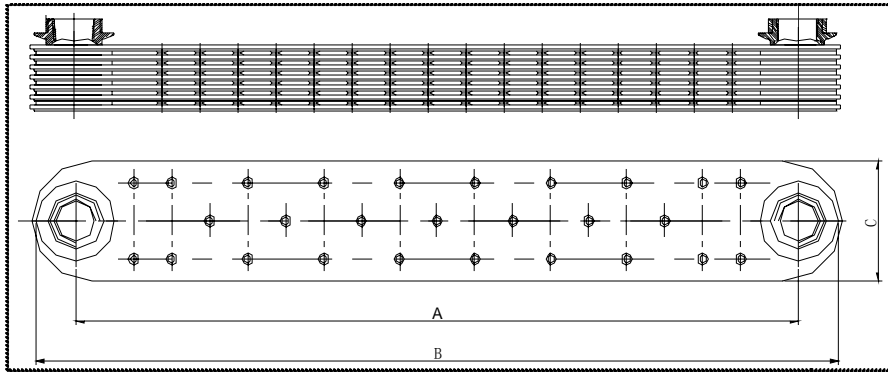
*Stainless Steel/aluminum Plate Oil Cooler*



Part No.	C (MM)	A (MM)	No. of plate	B (MM)	DPI
YMB274	44	292	4	332	2490
YMB275	44	292	3	332	2490
YMB276	44	292	3	332	2491
YMB277	44	292	3	332	2492
YMB278	44	292	3	332	2513
YMB279	44	292	3	332	2518
YMB280	44	292	3	332	2520
YMB281	44	292	6	332	2522
YMB282	44	292	7	332	2522
YMB283	44	292	6	332	2537
YMB284	44	292	7	332	2537
YMB285	44	292	6	332	2538
YMB286	44	292	7	332	2538
YMB287	44	292	4	332	2582
YMB288	44	292	4	332	2636
YMB289	44	292	4	332	2656
YMB290	35	305	4	340	1015C
YMB291	44	292	3	332	1088 (2)
YMB292	44	292	4	332	1091 (2)
YMB293	44	292	3	332	1217 (2)
YMB294	44	292	4	332	1482 (2)
YMB295	44	292	4	332	1689 (2)
YMB296	44	292	4	332	1786 (2)
YMB297	44	292	4	332	1826 (2)
YMB298	44	292	4	332	192 (2)
YMB299	44	292	4	332	204 (2)
YMB300	44	292	4	332	2042 (2)
YMB301	44	292	3	332	2369 (2)
YMB302	44	292	3	332	2514 (2)
YMB303	44	292	3	332	2620 (2)
YMB304	44	292	3	332	312 (2)
YMB305	44	292	3	332	955 (2)
YMLB306	28.4	292	3	320.4	
YMLB307	28.4	292	4	320.4	



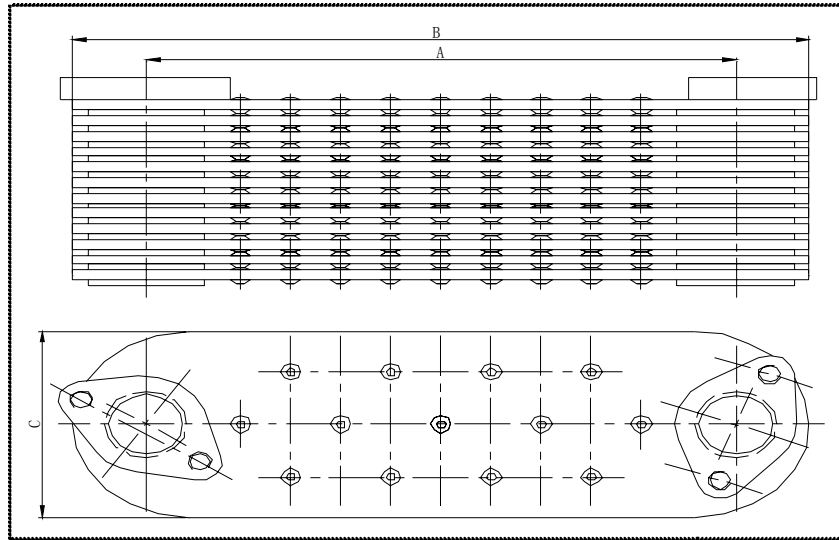
*Stainless Steel/aluminum Plate Oil Cooler*



***For engine cooling***

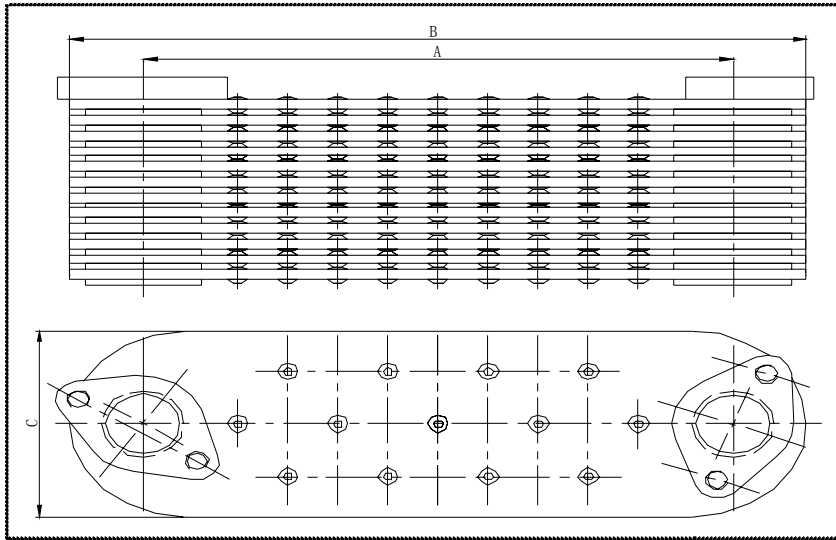
Part No.	C (MM)	A (MM)	No. of plate	B (MM)	Remark
YMB311	34	200	7	236	engine
YMB312	78	200	7	250	engine
YMB313	78	200	11	250	engine
YMB314	78	200	12	250	engine
YMB315	78	200	14	250	engine
YMB316	78	200	15	250	engine
YMB317	78	180	7	223.2	engine
YMB318	43	160	7	203	engine
YMB319	78	254	9	293	engine
YMB320	100	340	9	409	engine
YMB321	39.5	365	7	399	engine
YMB322	78	380	9	426	engine
YMB323	78	380	11	426	engine
YMB324	54	380	9	434	engine
YMB325	78	385	4	426	engine
YMB326	78	457	6	514	engine
YMB327	78	457	7	514	engine
YMB328	78	457	8	514	engine
YMB329	78	457	12	514	engine
YMB330	78	457	14	514	engine
YMB331	78	457	18	514	engine
YMB332	78	480	9	528	engine
YMB333	78	480	11	528	engine
YMB334	78	480	14	528	engine

*Stainless Steel/aluminum Plate Oil Cooler*



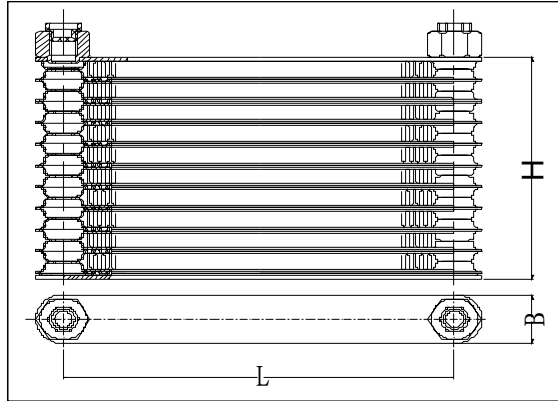
Part No.	C(MM)	A (MM)	No. of plate	B (MM)	Remark
YMB335	78	480	15	528	engine
YMB336	34	312.7	4	345	engine
YMB337	34	312.7	7	345	engine
YMB338	36	390	7	426	engine
YMB339	35	305	4	340	engine
YMB340	75	478	15	548	engine
YMB341	78	457	18	514	engine
YMB342	78	480	9	528	engine
YMB343	78	480	11	528	engine
YMB344	78	480	14	528	engine
YMB345	78	480	15	528	engine
YMB346	34	312.7	4	345	engine
YMB347	34	312.7	7	345	engine
YMB348	36	390	7	426	engine
YMB349	35	305	4	340	engine
YMB350	75	478	15	548	engine
YMB351	34	200	7	236	engine
YMB352	78	200	7	250	engine
YMB353	78	200	11	250	engine
YMB354	78	200	12	250	engine
YMB355	78	200	14	250	engine
YMB356	78	200	15	250	engine
YMB357	78	180	7	223.2	engine
YMB358	43	160	7	203	engine
YMB359	78	254	9	293	engine
YMB360	100	340	9	409	engine
YMB361	39.5	365	7	399	engine
YMB362	78	380	9	426	engine

*Stainless Steel/aluminum Plate Oil Cooler*



Part No.	C (MM)	A (MM)	No. of plate	B	Remark
YMB363	78	380	11	426	engine
YMB364	54	380	9	434	engine
YMB365	78	385	4	426	engine
YMB366	78	457	6	514	engine
YMB367	78	457	7	514	engine
YMB368	78	457	8	514	engine
YMB369	78	457	12	514	engine
YMB370	78	457	14	514	engine
YMB371	78	457	18	514	engine
YMB372	78	480	9	528	engine
YMB373	78	480	11	528	engine
YMB374	78	480	14	528	engine
YMB375	78	480	15	528	engine
YMB376	34	312.7	4	345	engine
YMB377	100	498	17	560	engine

*AIR TO OIL COOLER*



P/N	SIZE			Connection thread		REMARK	
	B (MM)	L (MM)	NO. OF PLATE	Int.	Ext.		
YMN001	32	200	7	G3/8			
YMN002	32	200	3	G3/8			
YMN003	32	200	9	G3/8			
YMN004	32	200	6	G3/8			
YMN005	32	200	11	G3/8			
YMN006	32	200	13	G3/8			
YMN007	32	200	17	G3/8			
YMN008	32	200	21	G3/8			
YMN009	32	200	5	G3/8			
YMN010	19	247.7	13	5/8-18UNF-2B			
YMN011	32	226	6	M16×1.5-6H			
YMN012	32	226	9	RC3/8			
YMN013	32	226	9			With 2 pipes	
YMN014	32	226	15		M<>×1.5-6g		
YMN015	32	226	17	G1/2			
YMN016	32	226	11	RC3/8			
YMN017	32	226	8			With 1 pipes	
YMN018	32	226	11			Adapt	
YMN019	49	530	4			With 2 pipes	
YMN020	49	530	6	φ 22Flange			
YMN021	49	530	28			With 2 pipes	
YMN022	49	530	7			With 1 pipes	
YMN023	49	530	4			With 2 pipes	

YMN024	51	248	8	18×1.5-6g		
YMN025	49	330	8	RC3/8		
YMN026	49	330	22	PT3/4	PT1/2	
YMN027	51	128	7	according to customer's requirement		
YMN028	51	128	10	according to customer's requirement		
YMN029	51	128	12	according to customer's requirement		
YMN030	51	128	13	according to customer's requirement		
YMN031	51	128	16	according to customer's requirement		
YMN032	51	128	19	according to customer's requirement		
YMN033	50.5	175	13	according to customer's requirement		
YMN034	50	248	7	according to customer's requirement		
YMN035	50	248	9	according to customer's requirement		
YMN036	50	248	10	according to customer's requirement		
YMN037	50	248	13	according to customer's requirement		
YMN038	50	248	16	according to customer's requirement		
YMN039	50	248	19	according to customer's requirement		
YMN040	50	248	25	according to customer's requirement		
YMN041	50	248	28	according to customer's requirement		
YMN042	50	248	30	according to customer's requirement		
YMN043	50	318	10	according to customer's requirement		
YMN044	50	318	16	according to customer's requirement		
YMN045	50	318	19	according to customer's requirement		
YMN046	50	318	25	according to customer's requirement		
YMN047	50	210	7	according to customer's requirement		
YMN048	50	210	10	according to customer's requirement		
YMN049	50	210	13	according to customer's requirement		
YMN050	50	210	15	according to customer's requirement		
YMN051	50	210	16	according to customer's requirement		
YMN052	50	210	19	according to customer's requirement		
YMN053	32	218	13	according to customer's requirement		
YMN054	32	218	15	according to customer's requirement		
YMN055	32	200	13	according to customer's requirement		
YMN056	32	226	15	according to customer's requirement		
YMN057	32	226	17	according to customer's requirement		
YMN058	42	218	13	according to customer's requirement		
YMN059	42	218	15	according to customer's requirement		